



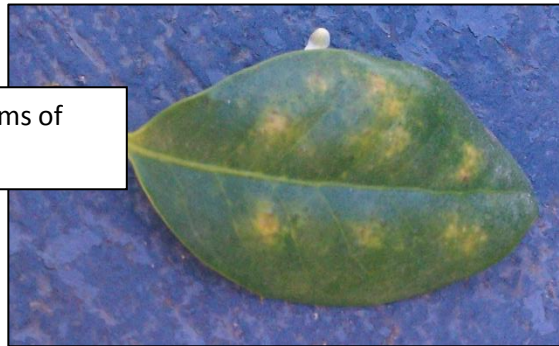
KNOWING IS ½ THE BATTLE: Tea Scale

Tea scale (*Fiorinia theae*) is an invasive armored scale insect originating from South East Asia. This pest affects a wide variety of plants, but is most serious on camellias and holly species. Early symptoms of the pest are mottled leaf yellowing, which is an indication of the insect feeding on the leaf's underside.

Female scales initially form a flat yellow test (shell) that turns brown and hard as they mature. Male scales form a soft white test. This insect has multiple generations per year beginning as temperatures warm in late Fall. As crawlers hatch they move to new leaves and begin feeding. Damage from tea scale results in leaf yellowing, early leaf drop, reduced blooms, and decreased plant vitality.

Systemically applied insecticides will control tea scale, but may not always be the best option. Foliar treatment of adult scales is difficult as they are protected by their tests. Therefore, foliar spray treatments are directed at the unprotected crawler life phase of this insect.

Mottled Yellow Leaf: Symptoms of Scale Feeding



Signs of Tea Scale on Underside of Leaf